

REACH Region III - Monthly Report: March

[Click here](#) to view

Update

Clinical Corner



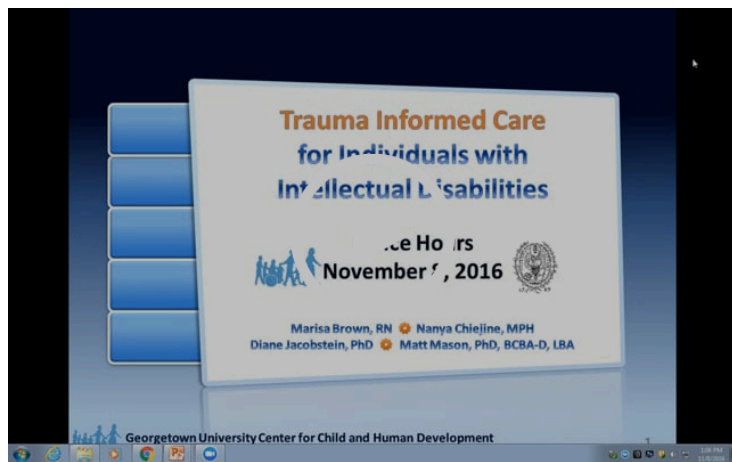
March Data

Adults

Referrals: 37
 Active Clients: 53
 Crisis Plan Hours: 175.6
 Crisis Prevention hours: 254.2

Calls to Crisis Line

Information: 32
 Crisis Prevention: 154



Trauma-Informed Care for Individuals with Intellectual Disabilities

Supporting individuals with IDD through grief and loss.

Crisis Face to Face
Response: 34 Face to
Face + 2 Telehealth
Total Calls: 222

*Average Crisis/Face to
Face Response Time:*
74.7 minutes

**Crisis Therapeutic
Home**

Emergency Bed Days:
163
Step-down Bed Days: 0
Prevention Bed Days: 0

Children

Referrals: 28
Active Clients: 57
Crisis Plan Hours: 130.4
Crisis Prevention Hours:
198.6

Calls to Crisis Line

Information: 22
Crisis Prevention: 11
Crisis Face to Face
Response: 24 Face to
Face + 0 Telehealth
Total Calls: 57

*Average Crisis/Face to
Face Response Time:*
63.4 minutes

Our Referral Form

[Click here](#) to download it, and
please share with anyone in
your system that makes
REACH referrals. Thank you!

REACH Region III

Email: info@swvareach.org
Fax: 540.267.3403

This session focuses on the District of Columbia's
initiative on Trauma Informed Care and highlights
grief among people with intellectual disabilities and
how to provide appropriate support. Specific
objectives include:

1. Individuals with intellectual disabilities experience
grief as a traumatic experience when they lose a
loved one like anyone else, but may express their
loss differently. We will explore how people with ID
may express their grief.
2. We will discuss recommend strategies for
supporting these individuals through their grieving
process.

Click on the video above or [click here](#) to view.

Videos



DIY Sensory Bottles | How to Make a Sensory Bottle

YouTube.com

Click on the video above or [click here](#) to view.

Apps



Visuals2Go

Create - Communicate - Print!

Visuals2Go is founded by a Special Education teacher and developed in collaboration with speech pathologists and parents.

[Click here](#) to learn more.



Super-quick meditation exercise

Walk up the staircase and find the present moment

YouTube.com

If you find a staircase nearby, you can make this a walking meditation. If not, just build a staircase in your mind. Paying attention to your body while walking is a great way to practice mindfulness.

Click on the video above or [click here](#) to view.

Books & Podcasts

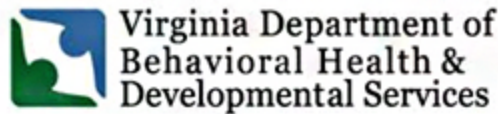


Transition Strategies for Adolescents and Young Adults Who Use AAC

by David B. McNaughton (Editor), David R. Beukelman (Editor)

[Click here](#) to learn more.

Health



DBHDS/Office of Integrated Health

The April Newsletter includes:

- Positioning to Reduce Skin Breakdown
- April is Autism Acceptance Month
- ABA Snippets

[Click here](#) for the newsletters and safety alert archives.

Employment Opportunities



REACH Region III Is Hiring!

The **REACH** program is the statewide crisis system of care that is designed to meet the crisis support needs of individuals who have a developmental disability and are experiencing crisis events which put them at risk for homelessness, incarceration, hospitalization, and/or danger to self or others.

REACH services are available statewide, with one regional program being located in each of the Commonwealth's five DD regions.

REACH Mission Statement

Individuals with intellectual and/or developmental disabilities shall be supported with services that allow the individual to live the most inclusive life possible in his/her community which includes access to appropriate and effective crisis stabilization, intervention, and prevention services including mental health treatment services when indicated.

What does it mean to our staff to work for REACH?

"I enjoy working in the REACH program as it allows me to be creative and to utilize skills and abilities that most programs do not. REACH services also allows me the opportunity to witness the impact of my work on clients and their families/providers." - Junior Stoots, REACH Coordinator

"Working for REACH means to me being the first line of support when working with a challenging population. It means being flexible and dependable for my co-workers and the consumers we serve." – Nicole Dailey, CSP II-Utilization and Training

REACH Region III - Southwestern Virginia.

Areas Served:

Blue Ridge BH: Botetourt, Buchanan Town, Daleville, Eagle Rock, Fincastle, Oriskany, Roanoke City, Troutville, Arcadia, Catawba, Craig, New Castle, Newport, Paint Bank, Bent Mountain, Roanoke, Vinton, Salem, Vinton

Cumberland Mt CSB: Big Rock, Buchanan, Grundy, Pilgrims Knot, Vansant, Castlewood, Cleveland, Dante, Honaker, Lebanon, Rosedale, Russell, Tazewell

Highland CS: Washington County, Abingdon, Clarksville, Damascus, Emory, Glade Spring, Meadowview and City of Bristol, Virginia

New River Valley CS: Radford, Willis, Copper Hill, Floyd, Giles, Narrows, Pearisburg, Rich Creek, Staffordsville, Blacksburg, Christiansburg, Claudville, Montgomery, Riner, Shawsville, Pilot, Allisonia, Draper, Dublin, Hiwassee, New Bern, Pulaski, Pembroke, Meadows of Dan

Danville-Pittsylvania CSB: Danville, Blairs, Callands, Chatham, Gretna, Pittsylvania, Ringgold, Sandy Level

Dickenson County BHS: Birchleaf, Breaks, Clinchco, Clintwood, Dickenson, Haysi

Mt. Rogers CSB: Bastian, Bland, Rocky Gap, Carroll, Atkins, Ceres, Chilhowie, Elk Creek, Fires, Galax, Grayson, Groseclose, Hillsville, Independence, Mouth of Wilson, Smyth, Sugar Grove, Troutdale, Whitetop, Saltville, Marion, Barren Springs, Crockett, Fort Chiswell, Foster Falls, Ivanhoe, Max Meadows, Wythe, Wytheville, Rural Retreat

Piedmont CS: Martinsville, Boones Mill, Burnt Chimney, Callaway, Ferrum, Franklin, Glade Hill, Penhook, Rocky Mount, Smith Mountain Lake, Union Hall, Wirtz, Axton, Bassett, Collinsville, Fieldale, Henry, Ridgeway, Spencer, Stanleystown, Patrick

Planning District One BHS: Dryden, Ewing, Jonesville, Lee, Middlesboro, Pennington Gap, Rose Hill, Stickleystown, Norton, Clinchport, Duffield, Dungannon, Gate City, Hiltons, Nickelsville, Scott, Weber City, Appalachia, Big Stone Gap, Coeburn, Pound, St. Paul, Wise,

Southside CSB: Warfield, Alberta, Brunswick, Gasburg, Lawrenceville, Rawlings, Alaton, Boydton, Buffalo Junction, Chase City, Clarksville, Clover, Halifax, Mecklenburg, Nathalie, Scottsburg, Skipwith, South Boston, South Hill, Sutherlin, Virgilina, Bracey

For information on available positions and to apply [click here.](#)

(Type 'REACH' in the search bar)

Opportunities and Events



Register for this New River bass fishing tournament fundraiser for VTAC!

The New River Angler's for Autism Awareness is hosting it's 2nd charity bass fishing tournament on Saturday, April 27 from 7am - 3pm to benefit our clinic! Visit us on the Mobile Autism Clinic Saturday afternoon in Galax (5785 Fries Rd.) and speak with our SAFE intern and graduate student clinician to learn more about what we do to merge science with service.

Presented by the [NewRiver Anglers & Camper Retreats Facebook group](#), the tournament is open to motorless boaters & wading anglers (one person/boat).

Awards for 1st, 2nd, 3rd and Big Bass. Camping available.

Reach out to [New River Outdoor Adventures at their website](#) for more information and to register.

DBHDS



Virginia Department of
Behavioral Health &
Developmental Services

[Click Here](#) for the website.

[Click Here](#) for Provider Development.

Resources



The Arc of Virginia

Our Mission. The Arc of Virginia promotes and protects the human rights of people with intellectual and developmental disabilities and actively supports their full inclusion and participation in the community throughout their lifetimes.

Our Vision. People with intellectual and developmental disabilities are valued as classmates, coworkers, neighbors, citizens and friends.

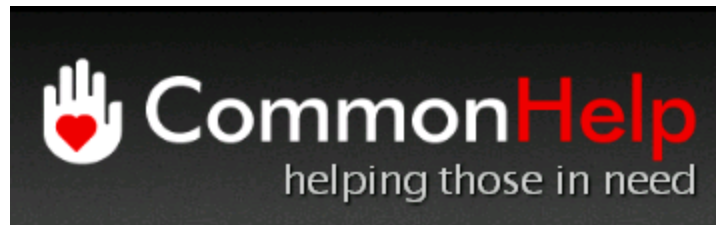
[Click here](#) for their website.



The Virginia Tech Autism Clinic

VTAC in the Psychology Department of Virginia Tech, opened in the Fall of 2005 to provide clinical services to individuals with Autism Spectrum Disorders and their families in the surrounding New River Valley.

[Click here](#) for their website.



Virginia CommonHelp

In these difficult times, many Virginians are looking for assistance with essential services.

Virginia CommonHelp makes it easy for you to apply for multiple Department of Social Services programs using one online application.

CommonHelp partners with several government agencies to offer Virginians a fast and easy way to apply for a wide range of services:

- Help with paying for childcare
- Home energy assistance
- Help with buying food
- Low or no-cost healthcare
- Temporary cash assistance for families with children

To determine your eligibility for one or more programs, you can complete CommonHelp's [online eligibility portal](#). The portal will tell you which programs you qualify for and how to apply for them online. Visit the [CommonHelp website](#) to learn more about the programs and government agencies that they partner

with.

The Employment Toolkit for Job Seekers with Autism

readyjob.org

[Click here](#) to view.



NADD

NADD is a not-for-profit membership association established for professionals, care providers and families to promote understanding of and services for individuals who have developmental disabilities and mental health needs. [Click here](#) for their website.



Special needs require special attorneys.

The Special Needs Alliance

The Special Needs Alliance is a national, non-profit organization committed to helping individuals with disabilities, their families and the professionals who serve them. [Click here](#) for their website and [here](#) for **The Voice -Special Needs Alliance Newsletter**.



The Virginia Autism Council

This website is Virginia's clearinghouse on best practices and research-based education and training opportunities to advance personnel development and knowledge regarding autism in Virginia. [Click here](#) for more information.



Commonwealth Autism

[Click here](#) to view Resources compiled by **Commonwealth Autism**.



New River Valley Disability Resource Center

A non-profit Center for Independent Living serving the NRV

New River Valley Disability Resource Center

A Non-Profit Center for Independent Living; Serving the NRV

[Click here](#) for their website for Events and Resources.

Vaccine Information Center - Virginia Department of Health

[Click here](#) for information on VDH COVID-19 Vaccination Response.

ACT NOW!

WEAR A MASK STAY 6 FEET APART AVOID CROWDS

Copyright © 2015 NRVCS, All rights reserved.

[About REACH](#)

[Fact Sheet-Adult](#) [Fact Sheet-Children](#)

[Contact REACH Region III](#)

Our mailing address is:

824 W. Main St., Radford, VA 24141

Crisis and Information Line - 1.855.887.8278

Business - 540.267.3435

Fax - 540.267.3403

Email - info@swvaREACH.org

Want to change how you receive these emails?

You can [update your preferences](#) or [unsubscribe from this list](#)

[Visit Our Website](#)

[Feedback and Submissions!](#)

[Last Month's Newsletter](#)

[Subscribe!](#)



Share



Tweet



Forward

This email was sent to <<Email Address>>

[why did I get this?](#) [unsubscribe from this list](#) [update subscription preferences](#)

REACH Region III / NRVCS · 824 West Main Street · Radford, VA 24141 · USA

