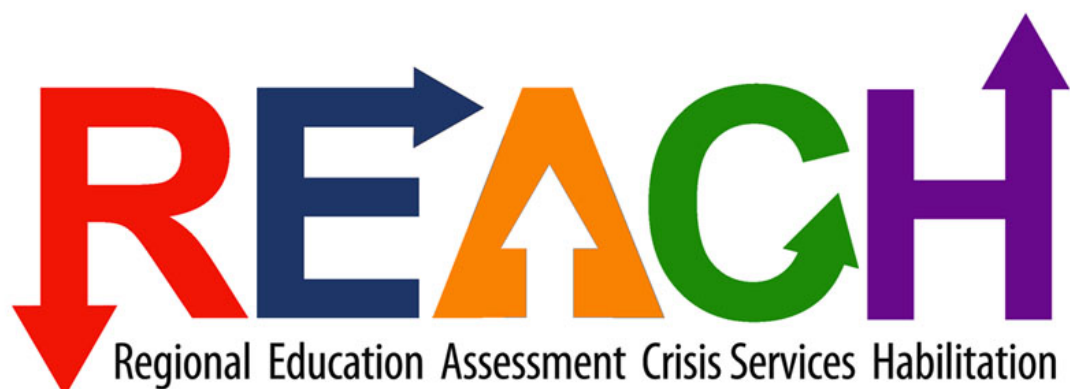


REACH Region III – The Newsletter
Vol.8, No.12, December 2022

[View this email in your browser](#)



Employment Opportunities



REACH Region III Is Hiring!

The **REACH** program is the statewide crisis system of care that is designed to meet the crisis support needs of individuals who have a developmental disability and are experiencing crisis events which put them at risk for homelessness, incarceration, hospitalization, and/or danger to self or others.

REACH services are available statewide, with one regional program being located in each of the Commonwealth's five DD regions.

REACH Mission Statement

Individuals with intellectual and/or developmental disabilities shall be supported with services that allow the individual to live the most inclusive life possible in his/her community which includes access to appropriate and effective crisis stabilization, intervention, and prevention services including mental health treatment services when indicated.

What does it mean to our staff to work for REACH?

“I enjoy working in the REACH program as it allows me to be creative and to utilize skills and abilities that most programs do not. REACH services also allows me the opportunity to witness the impact of my work on clients and their families/providers.” - Junior Stoots, REACH Coordinator

“Working for REACH means to me being the first line of support when working with a challenging population. It means being flexible and dependable for my co-workers and the consumers we serve.” – Nicole Dailey, CSP II-Utilization and Training

REACH Region III - Southwestern Virginia.

Areas Served:

Blue Ridge BH: Botetourt, Buchanan Town, Daleville, Eagle Rock, Fincastle, Oriskany, Roanoke City, Troutville, Arcadia, Catawba, Craig, New Castle, Newport, Paint Bank, Bent Mountain, Roanoke , Vinton, Salem, Vinton

Cumberland Mt CSB: Big Rock, Buchanan, Grundy, Pilgrims Knot, Vansant, Castlewood, Cleveland, Dante, Honaker, Lebanon, Rosedale, Russell, Tazewell

Highland CS: Washington County, Abingdon, Clarksville, Damascus, Emory, Glade Spring, Meadowview and City of Bristol, Virginia

New River Valley CS: Radford, Willis, Copper Hill, Floyd, Giles, Narrows, Pearisburg, Rich Creek, Staffordsville, Blacksburg, Christiansburg, Claudville, Montgomery, Riner, Shawsville, Pilot, Allisonia, Draper, Dublin, Hiwassee, New Bern, Pulaski , Pembroke, Meadows of Dan

Danville-Pittsylvania CSB: Danville, Blairs, Callands, Chatham, Gretna,
Pittsylvania, Ringgold, Sandy Level

Dickenson County BHS: Birchleaf, Breaks, Clinchco, Clintwood, Dickenson ,
Haysi

Mt. Rogers CSB: Bastian, Bland , Rocky Gap, Carroll , Atkins, Ceres,
Chilhowie, Elk Creek, Fires, Galax, Grayson, Groseclose, Hillsville,
Independence, Mouth of Wilson, Smyth, Sugar Grove, Troutdale, Whitetop,
Saltville, Marion, Barren Springs, Crockett, Fort Chiswell, Foster Falls, Ivanhoe,
Max Meadows, Wythe, Wytheville, Rural Retreat

Piedmont CS: Martinsville, Boones Mill, Burnt Chimney, Callaway, Ferrum,
Franklin , Glade Hill, Penhook, Rocky Mount, Smith Mountain Lake, Union Hall,
Wirtz, Axton, Bassett, Collinsville, Fieldale, Henry, Ridgeway, Spencer,
Stanleytown, Patrick

Planning District One BHS: Dryden, Ewing, Jonesville, Lee, Middlesboro,
Pennington Gap, Rose Hill, Stickleysville, Norton, Clinchport, Duffield,
Dungannon, Gate City, Hiltons, Nickelsville, Scott, Weber City, Appalachia, Big
Stone Gap, Coeburn, Pound, St. Paul, Wise,

Southside CSB: Warfield, Alberta, Brunswick , Gasburg, Lawrenceville,
Rawlings, Alaton, Boydton, Buffalo Junction, Chase City, Clarksville, Clover,
Halifax, Mecklenburg, Nathalie, Scottsburg, Skipwith, South Boston, South Hill,
Sutherlin, Virgilina, Bracey

For information on available positions and to apply [click here.](#)
(Type 'REACH' in the search bar)

REACH Region III - Monthly Report: November

[Click here](#) to view

Update



November Data

Adults

Referrals: 42
 Active Clients: 74
 Crisis Plan Hours: 55:18
 Crisis Prevention hours:
 340:25

Calls to Crisis Line

Information: 38
 Crisis Prevention: 107
 Crisis Face to Face
 Response: 24 Face to
 Face + 7 Telehealth
Total Calls: 176

*Average Crisis/Face to
 Face Response Time:*
 36:96 minutes

Crisis Therapeutic Home

Emergency Bed Days: 44
 Step-down Bed Days: 30
 Prevention Bed Days: 12

Children

Referrals: 23
 Active Clients: 54
 Crisis Plan Hours: 38
 Crisis Prevention Hours:
 252:77

Clinical Corner



Health Care For Adults With Intellectual and Developmental Disabilities:

Toolkit for Primary Care Providers

Adults with intellectual or other developmental disabilities face a cascade of health disparities. They often:

- have complex or difficult-to-treat medical conditions
- have difficulty accessing health care
- may receive inadequate health care
- may have difficulties expressing their symptoms and pain
- receive little attention to wellness, preventive care, and health promotion

[Click here](#) to learn more and for the toolkit.

Videos

Calls to Crisis Line

Information: 22

Crisis Prevention: 16

Crisis Face to Face

Response: 36 Face to

Face + 1 Telehealth

Total Calls: 75

Average Crisis/Face to

Face Response Time:

40:11 minutes

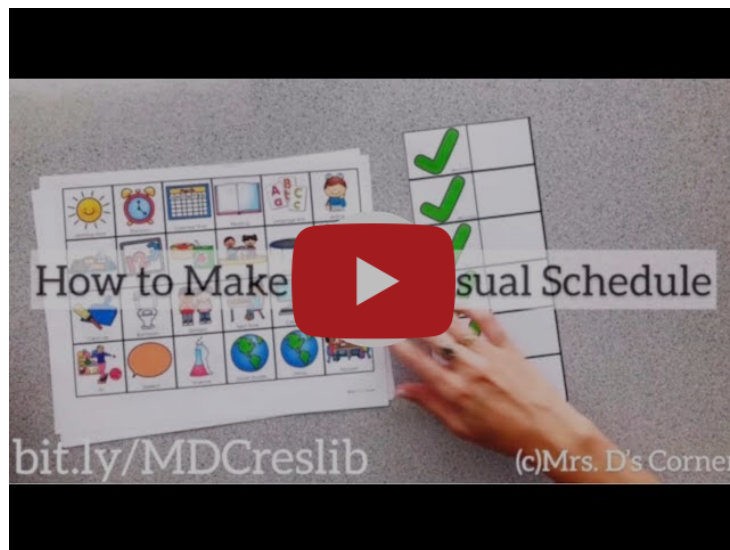
Our Referral Form

Click [here](#) to download it, and please share with anyone in your system that makes REACH referrals. Thank you!

REACH Region III

Email: info@swvareach.org

Fax: 540.267.3403

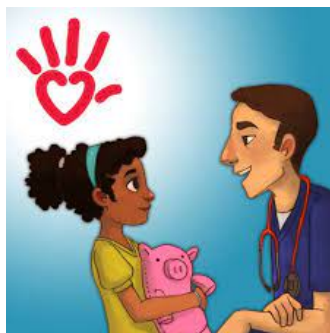


How to Make a Flip Visual Schedule & Visual Schedule Free Download

YouTube.com

Click on video above or [click here](#) to view.

Apps



Simply Sayin' Medical Jargon

This free app includes pictures you can draw on, sounds you can listen to, and a family-friendly glossary of medical terms for easy reference.



The Importance of Inclusion

TEDx Talks/YouTube.com

Sara Mauldin advocates for the celebration, not separation, of all people. As a special education teacher and a disability rights advocate, Mauldin has dedicated her adult career to including students with disabilities in the classroom and on the playground.

Click on video above or [click here](#) to view.

[Click here](#) to learn more.

Health

Books & Podcasts



Autism Holiday Survival Series | How To Deal with Family

[Click here](#) to listen to this podcast.



Virginia Department of
Behavioral Health &
Developmental Services

DBHDS/Office of Integrated Health

The December Newsletter Includes:

- Antiviral Medications
- App of the Month - The Sickweather app
- ABA Snippets

[Click here](#) to view.

Opportunities and Events



EVENTS (online)

[RTC Rural: Rural Disability Summit and Research Conference](#)

A virtual research and practice summit with presentations and panel discussions on personal assistance

services and rural digital access.
Tuesday, and Wednesday, January 10 & 11, 2023
1-2:30pm Mountain Time

EVENTS (in person)

[Next Three Days: Holiday-themed events around the NRV](#)

Visit this page to learn about local events and find something that may be appropriate for you or your family.

[Virginia Tech Cooperative Extension 4-H Kids Tech University](#)

STEM Program for kids ages 9-12 and their parents. Now enrolling for Winter

Saturday, Jan 28th, Feb 18th, Mar 18th, and Apr 1st, 2023.

In-person and virtual options.

[Register](#) for either the In-Person Program (\$75) OR the Virtual Program (\$50).

Scholarships are available.

DBHDS



Virginia Department of
Behavioral Health &
Developmental Services

[Click Here](#) for the website.

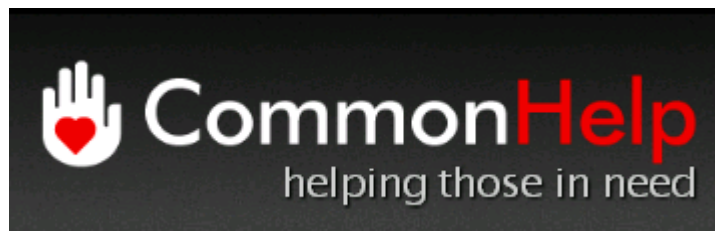
[Click Here](#) for Provider Development.

Resources

The ARC of the United States

Our Virtual Program Library for People With Disabilities Is Now Live!

[Click here](#) to view!



Virginia CommonHelp

In these difficult times, many Virginians are looking for assistance with essential services.

Virginia CommonHelp makes it easy for you to apply for multiple Department of Social Services programs using one online application.

CommonHelp partners with several government agencies to offer Virginians a fast and easy way to apply for a wide range of services:

- Help with paying for childcare
- Home energy assistance
- Help with buying food
- Low or no-cost healthcare
- Temporary cash assistance for families with children

To determine your eligibility for one or more programs, you can complete CommonHelp's [online eligibility portal](#). The portal will tell you which programs you qualify for and how to apply for them online. Visit the [CommonHelp website](#) to learn more about the programs and government agencies that they partner with.

The Employment Toolkit for Job Seekers with Autism

readyjob.org

[Click here](#) to view.



The Arc of Virginia

Our Mission. The Arc of Virginia promotes and protects the human rights of people with intellectual and developmental disabilities and actively supports their full inclusion and participation in the community throughout their lifetimes.

Our Vision. People with intellectual and developmental disabilities are valued as classmates, coworkers, neighbors, citizens and



The Virginia Tech Autism Clinic

VTAC in the Psychology Department of Virginia Tech, opened in the Fall of 2005 to provide clinical services to individuals with Autism Spectrum Disorders and their families in the surrounding New River Valley.

[Click here](#) for Events and News!

friends.

[Click here](#) for their website.

[Click here](#) for their website.



NADD

NADD is a not-for-profit membership association established for professionals, care providers and families to promote understanding of and services for individuals who have developmental disabilities and mental health needs. [Click here](#) for their website.



Special needs require special attorneys.

The Special Needs Alliance

The Special Needs Alliance is a national, non-profit organization committed to helping individuals with disabilities, their families and the professionals who serve them. [Click here](#) for their website and [here](#) for **The Voice -Special Needs Alliance Newsletter**.



The Virginia Autism Council

This website is Virginia's clearinghouse on best practices and research-based education and training opportunities to advance personnel development and knowledge regarding autism in Virginia. [Click here](#) for more information.



Commonwealth Autism

[Click here](#) to view Resources compiled by **Commonwealth Autism**.



New River Valley Disability Resource Center

A non-profit Center for Independent Living serving the NRV

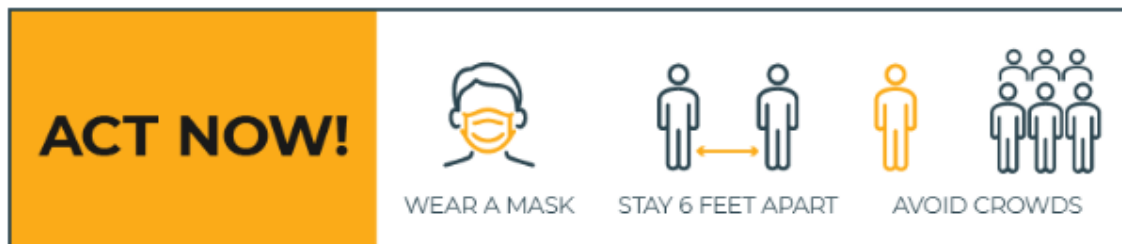
New River Valley Disability Resource Center

A Non-Profit Center for Independent Living; Serving the NRV

[Click here](#) for their website for Events and Resources.

Vaccine Information Center - Virginia Department of Health

[Click here](#) for information on VDH COVID-19 Vaccination Response.



Copyright © 2015 NRVCS, All rights reserved.

[About REACH](#)

[Fact Sheet-Adult](#) [Fact Sheet-Children](#)

[Contact REACH Region III](#)

Our mailing address is:

824 W. Main St., Radford, VA 24141

Crisis and Information Line - 1.855.887.8278

Business - 540.267.3435

Fax - 540.267.3403

Email - info@swvaREACH.org

Want to change how you receive these emails?

You can [update your preferences](#) or [unsubscribe from this list](#)

[Visit Our Website](#)

[Feedback and Submissions!](#)

[Last Month's Newsletter](#)

[Subscribe!](#)



Share



Tweet



Forward

This email was sent to <<Email Address>>

[why did I get this?](#) [unsubscribe from this list](#) [update subscription preferences](#)

REACH Region III / NRVCS · 824 West Main Street · Radford, VA 24141 · USA

