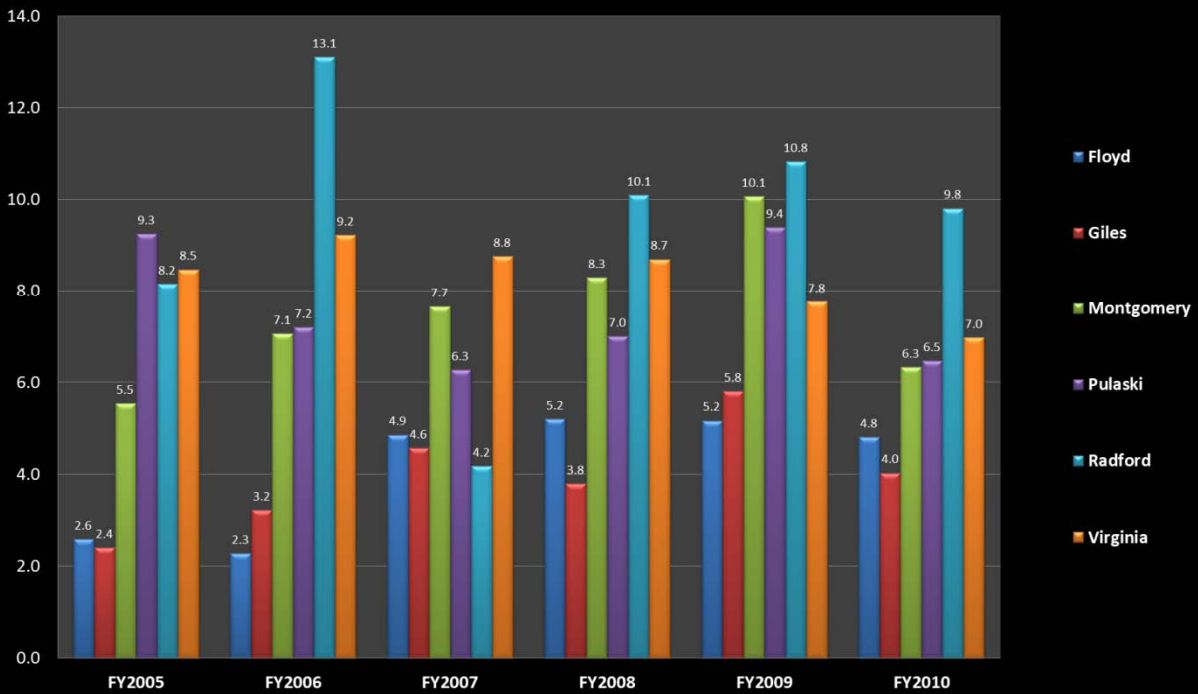


Juvenile Intake Complaints Related to Violence

Source: Court Service Unit Reports



	Floyd County	Giles County	Montgomery County	Pulaski County	Radford City	Virginia
2010 Rate/1000 Ages 0-17	4.8	4.0	6.3	6.5	9.8	7.0
Number of Complaints	15	15	97	43	19	12,891
Comparison to FY 2009	7.7% decrease	31% decrease	37.6% decrease	-31% decrease	-9.26 decrease	-10.26% decrease

What this means: All five jurisdictions experienced a **decrease** in the number of intake complaints related to violence from FY 2009 to FY 2010, which includes assault, robbery, sexual assault, murder, and manslaughter. The Virginia rate of 7.0 is **higher** than the NRV average of 6.28. For more information on understanding youth violence, please visit: <http://www.cdc.gov/NCIP/public/YVFactSheet.pdf>