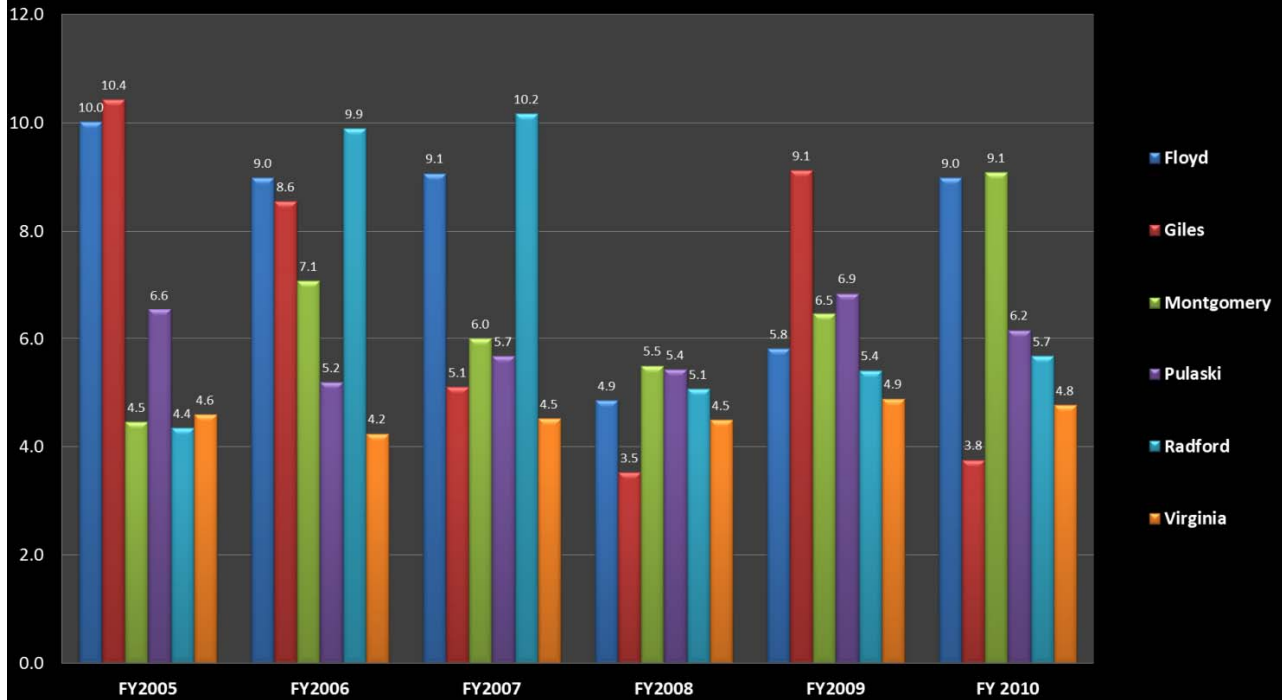


Juvenile Intake Complaints Related to Alcohol, Tobacco, & Other Drugs

Source: Court Service Unit Reports



	Floyd County	Giles County	Montgomery County	Pulaski County	Radford City	Virginia
2010 Rate/1000 Ages 0-17	9.0	3.8	9.1	6.2	5.7	4.8
Number of cases	28	14	135	41	11	8,809
Comparison to FY 2009	55% increase	58.24% decrease	40% increase	10.14% decrease	5.55% increase	2% decrease

What this means: Three of five jurisdictions saw an increase in the NRV in the number of intake complaints related to alcohol, tobacco, and other drugs from FY 2009 to FY 2010, with Montgomery and Floyd Counties showing substantial increases in ATOD intakes. The NRV average of 7.72 is **higher than the state average** of 4.8. For more information please visit:

<http://www.drugabuse.gov/infofacts/HSYouth>